

Means of Inquiry

the almost participatory planning
observation



I want to see if I leave tools and space
to kids to express their way of thinking
without showing them, how do they act and
form their environment...

■ Will they use
the given space?

■ Will they
create new things?

■ Will they
collaborate?

■ Will they use
another space?

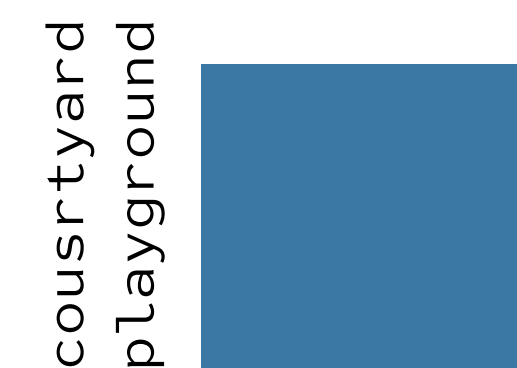
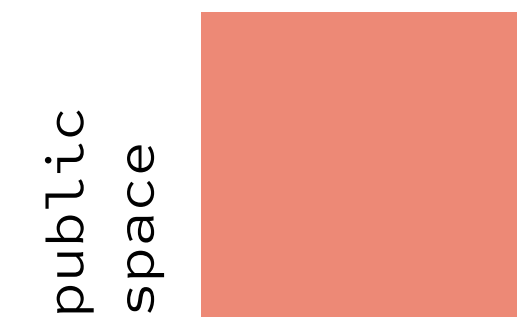
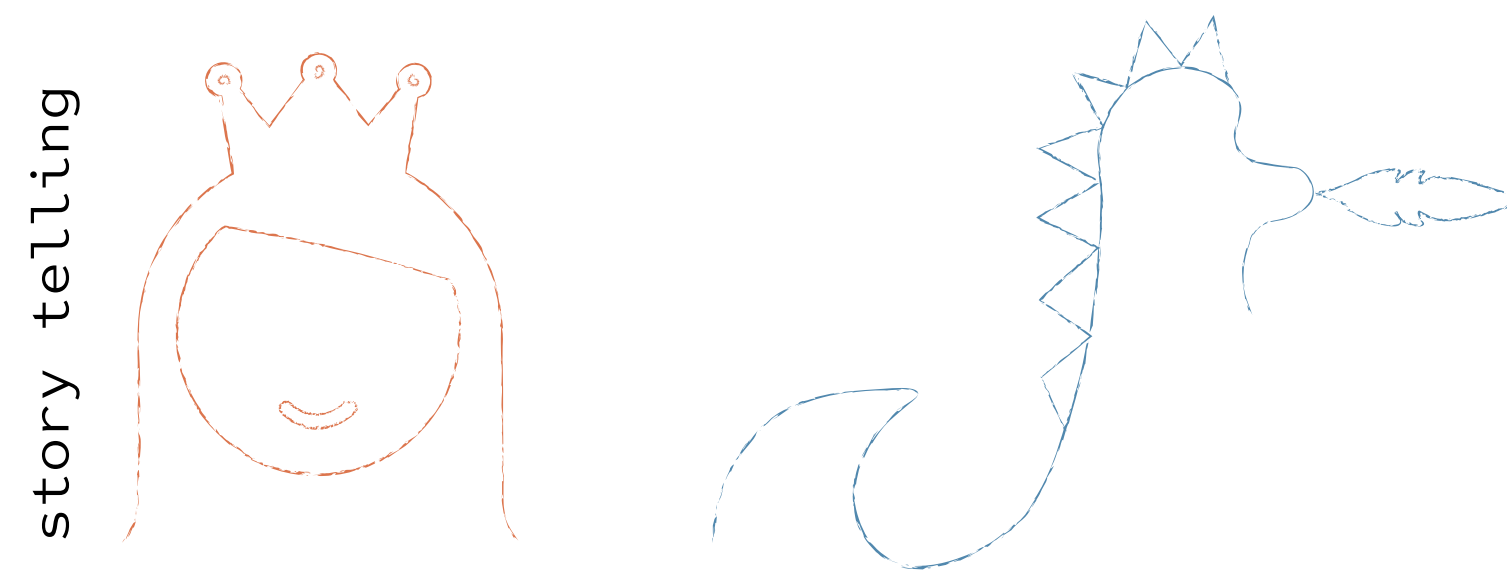
■
.....

■ Will they
do anything?

■ Will they
complete it?

Means of Inquiry

the almost participatory planning
observation



two types of unfinished drawings

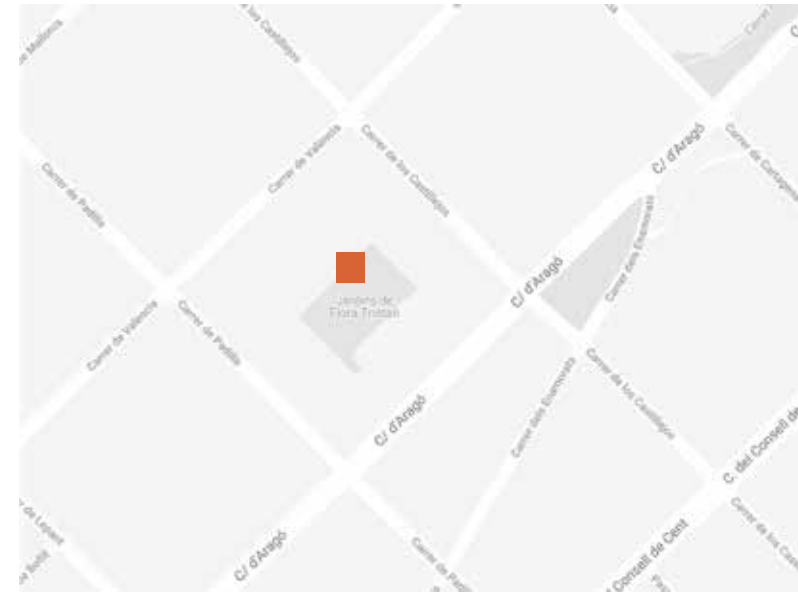
three different spaces

Courtyard playground

the slowly evolving co-creation



the space



the drawings



the result



Public space

the completely unexpected act



the space



the drawings



the result

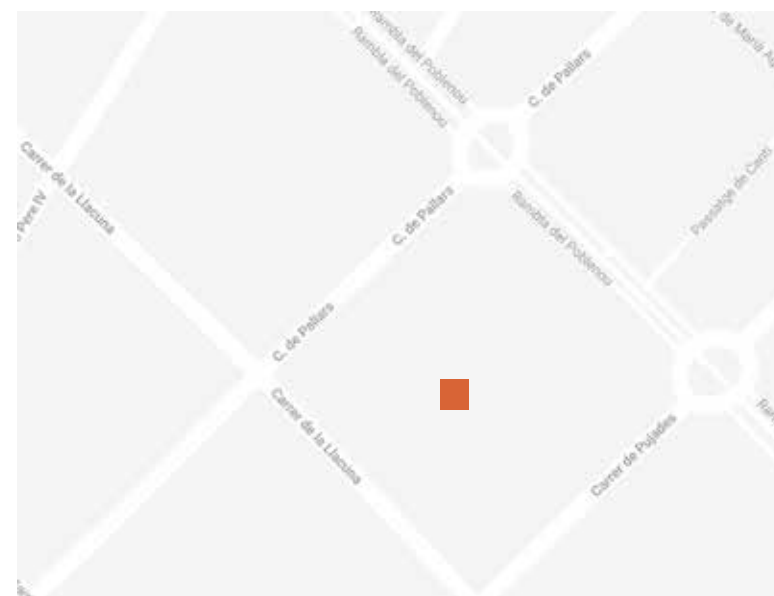


Neighborhood playground

the space where a new space was born



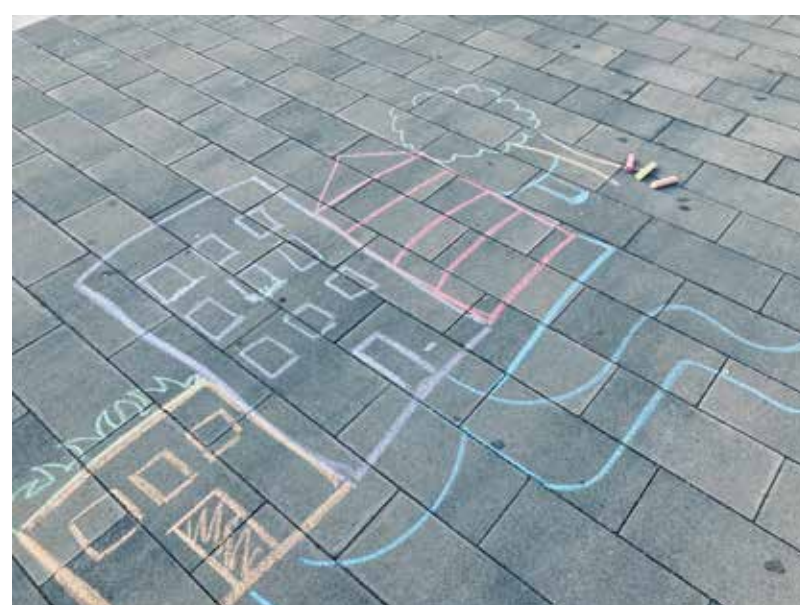
the space



the result



the drawings



Findings

the observations

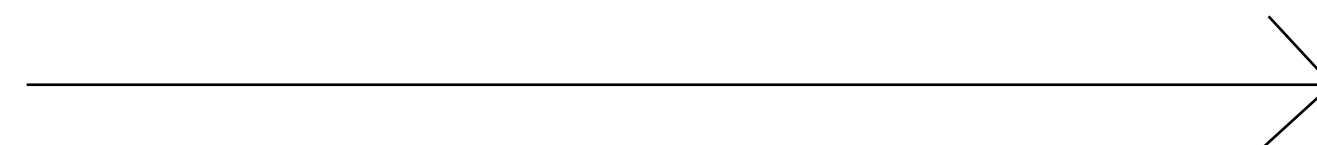
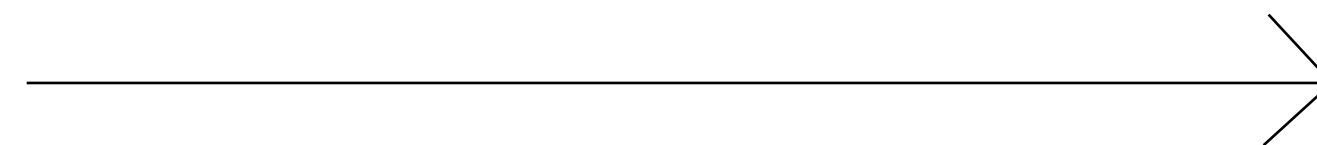
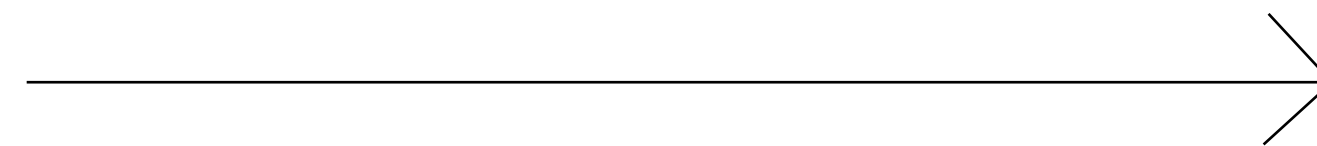
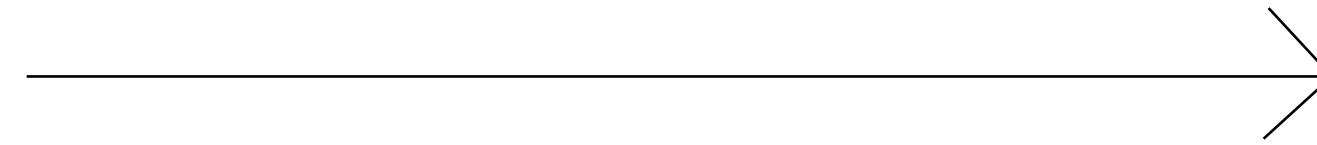


different size of community
different behaviour

more generations at the
same place, more actions

collaborations is a must

need for space to express



Next steps

the required actions



ethnographical research
in different neighbourhoods

cultural probes for
more generations, workshops

workshops, eg.:
gamified ideation
workshop for urban planning

ideation for tools
for expressing ideas